

# Bamyan Situation Briefings

CARE Afghanistan Bamyan HSL Survey  
Oct. 25 – 31 1998

A Report By:  
**Dr. K. Dawlaty**  
Monitoring & Evaluation Coordinator  
CARE Afghanistan

Date November 11, 1998



## HLS Survey Team:

Dr. K. Dawlaty: Genral situation observer and report writer  
M. Sharif: Program organizer and interview controller  
M. Sedique: Interviewer, community organizer and interview planner  
A. R. Ebadi : Interviewer and facilitator  
K. A. Jamil: Interviewer and facilitator  
N. Stanikzai: Interviewer  
A. Saboor: Interviewer

# TABLE OF CONTENTS

Bamyan Situation Briefings.....	1
A. CARE Afghanistan HLS survey scope in general.....	1
B. Briefings on Situations in Bamyan.....	2
• The HLS survey Areas in Bamyan.....	3
• The Roads and the Risks to Travel to Bamyan.....	3
• Visiting Abn-i-Sena Public Health Center and Assistant Governor of Bamyan.....	4
• Briefings on General Observations of the Situations in Bamyan.....	5
The Present Status of the Organizations in Bamyan.....	5
Land Use, Water Resources and Food Production.....	6
Livestock Raising.....	6
Transportation, Marketing and Income.....	8
Winter and Needs for Fuel/heating of Houses.....	8
Health of the People.....	9
Schools and the Status of Education.....	9
Village handicrafts.....	11
Future Outlooks for CARE Activities in Bamyan.....	11
A. Justification for CARE initiative for establishing an activity center in Bamyan.....	11
B. Selection of focal areas of needs for intervention.....	11

# **Bamyan Situation Briefings**

CARE Afghanistan Bamyan HLS Survey

October 25 – 31, 1998

## **A. CARE Afghanistan HLS survey scope in general:**

Based on CARE Afghanistan main focus to address the root causes of human sufferings and poverty and to advocate on behalf of the poor in Afghanistan, a broad scope household livelihood security survey (HLS) was planned in mid 1998.

The main objective of this survey was to identify the major constraints on livelihood of selected rural communities in Hazarajat and Paktia provinces and in specific urban areas of Kabul City.

The implementation of this survey was completed in five weeks (Sept. 22 – Oct. 31, 1998). The localities in the selected three provinces that were chosen for this survey are as follows:

- 1- In Gardez, Sayed Karam and Zurmat districts of Paktia province, the surveyed rural localities were:
  - Robot
  - Khataba
  - Zawoo
  - Salam Khail
  - Machalghu
  - Hakim Qala
  
- 2- In Kabul the urban areas surveyed were:
  - Qala-i-Shada
  - Karta-i-Now
  - Khoshal Khan Maina
  - Khair Khana Maina
  
- 3- In Bamyan center the rural localities surveyed were:
  - Bomsaraie
  - Katwaie
  - Chap-darah
  - Seiya Khar Bolaque
  - Qazan
  - Jogra Khail

The focal HLS interview formats implemented in this survey are as follow:

- The community group interview format
- The household head interview format
- The housewife/mother interview format for "health and nutrition" issues

The CARE Afghanistan 1998 HLS completed survey forms presently are in its data entry phase. The samples according to types of interviews and rural/urban localities based upon which an analytical HLS report will be forwarded by the end of Dec. 1998 are briefed in table (1).

Table (1): Community groups, household heads and women interviewed in CARE 1998 HLS selected locations survey.

Focal Provinces and Localities	Groups Interviewed No.	Household Head interviewed No.	Women Interviewed on Health and Nutrition No.
<b>Kabul:</b>			
- Qala-i-Shada	3	27	36
- Karta-i-Now	3	27	36
- Khoshal Khan Maina	3	27	0
- Khair Khana Maina	3	27	36
<b>Total</b>	<b>12</b>	<b>108</b>	<b>108</b>
<b>Gardez:</b>			
- Robot	1	18	12
- Khataba	1	17	10
- Zawoo	1	17	12
- Salam Khail	1	17	10
- Machalghu	1	17	10
- Hakim Qala	1	17	10
<b>Total</b>	<b>6</b>	<b>103</b>	<b>64</b>
<b>Bamyan:</b>			
- Bom Saraie	1	21	11
- Kat waie	1	11	10
- Chap-Darah	1	19	10
- Seiya Khar Bolaque	1	17	10
- Qazan	1	18	10
- Jogra Khail	1	17	13
<b>Total</b>	<b>6</b>	<b>103</b>	<b>64</b>
<b>Grand Total</b>	<b>24</b>	<b>314</b>	<b>236</b>

### **B. Briefings on Situations in Bamyan:**

In line with the HLS technical survey operation the results of which will be offered as an analytical report, this special briefing (based on visits and observations) is prepared as a highlighting of the general situation in Bamyan.

The reasons for such a special briefing on Bamyan are as follows:

- 1) Bamyan the central mountains region of Afghanistan has been an isolated and difficult to reach area within the geographical domain of assistance by NGO's, international and UN organizations during the years of Russian occupation and internal conflicts in Afghanistan.
- 2) Bamyan has been stressed by harsh blockade of trade and food transport during the empowerment process by Taliban in Afghanistan.

- 3) Bamyan farming and local food production operation has been stressed by natural disaster (plants and animal diseases) during the year 1997 – 1998.
- 4) Bamyan suffered the trauma of fighting (Socio-economic stress) during the capturing of power by Taliban from the opposition factions.

With the above reasons in mind, the focal points presented in this special briefing are highlighted as follows:

### **I. The HLS survey Areas in Bamyan:**

Bamyan province has six districts, the HLS survey was conducted in the central district, which is the proper Bamyan and the capital of the province (see map I in the annex).

The Survey Localities/Locations are:

(1): Bom Saraie (2): Katwai (3): Chap-darah (4): Qazan (5): Sieya Khar Bolague and (6): Jogra Khail. (see map II annex). These villages/locations, are mostly located in "Foladi Valley" around the Foladi river in the Southwest and one village (Jogra Khail) is located in the northeast close to the joining point of Surkh Darah and Foladi rivers.

### **II. The Roads and the Risks to Travel to Bamyan:**

The main reaching route to Bamyan is the road from "Maidan Shahar" to the mountainous narrow valley of "Jalraize" stretching Westward to "Onai Pass" and from there to high altitude of "Hajigak Pass". From here on words the road enters in to the very narrow winding valley of "Kaloo", (Bazar-I-Sad Burge). Here the road, which is turning to North-south direction, is mostly cut in the foot of the high mountainous valley closely stretched on the banks of the Kaloo River.

With the heavy traffic of large trucks and passenger busses and small vehicle coming from the northern provinces through "Pulikumeri," and from the central and southern regions to the north, this traveling and transportation road is becoming full of risks in many places. From our going direction to Bamyan, turned-over vehicles (including passenger busses) were observed in six places of this road. On our returned trip, the same situation had newly happened and about 1 – 2 hours of delay due to full blocking of roads and a puncturing of tire of our vehicle during crossing of Kaloo River took place. This was close to a narrow location of the Kaloo valley, which is called "Paie Moorie" where the river is passing through a natural under ground tunnel.

The distance from Maidan Shahar to Bamyan was 174 Km and it took about 11 hours to travel this distance (speed about 16 Km/hour). See sketch "I" in annex.

The situation of roads from Bamyan City to the surveyed communities (villages) were much better than the main road from "Maidan Shahar" to "Bamyan".

The organization of "SOLIDARITY" which has remained working in Bamyan, is in action of improving the main road between Maidan Shahar and Bamyan. Building of bridges graveling and widening of road is their main ongoing activity on this road.

### **III. Visiting Abn-i-Sena Public Health Center and the Assistant Governor of Bamyan and the Arrangement of Survey Operation in Bamyan.**

1. Provision of guidance and overnight staying place by Abn-i-Sena Public Health Center:

After the HLS survey team arrival to Bamyan city (25/10/98), Abn-i-Sena Public Health Center main office in Bamyan city was contacted and they warmly welcomed the team and provided two rooms and facilities to be used by the team during their stay in Bamyan.

In addition to this assistance, this public health NGO gave full guidance on selection of survey areas and in introducing a female survey team (three persons) with their close relatives/Mahram to carry out the health and nutrition survey inside the houses of the selected villages for HLS survey. These females were educated and had experiences of working in vaccination campaign with Abn-i-Sena Health Center.

2. Visiting "Maulawi Ershad" the assistant governor of Bamyan:

On the 26/10/98, at 10:00 AM, the HLS survey team visited "Maulawi Ershad" the assistant governor of Taliban in Bamyan. After reading of the introduction letter of CARE, he acknowledged the objectives of the HLS survey team and provided the permission that Abin-i-Sena Public Health Center can provide any needed assistance in this survey operation. He promised any needed help from his own side whenever required. During the visit he mentioned that the vehicles of some of the NGOs and UN organizations are kept in the governor compound for protection purpose and now they are available to be returned back to the related owners.

3. The Carrying out of the Survey Operation:

The survey of HLS was processed as follows:

- Arrival to Bamyan 25/10/98.
- Visiting Abn-i-Sena Public Health Center 26/10/98,
- Visiting assistant governor of Bamyan "Maulawi Ershad" for introduction and getting permission for the survey, 26/10/98.
- Starting the survey work in the villages of Rubat, Katwaie and Bom Sarie 27/10/98.
- Continuing the survey work in Bom Sarie and Seyakhar Belaque, Qazan valley and Chap Darah 29/10/98.
- Survey work at Jogra Khail village 29/10/98.
- Continuing the survey work at Seyakhar Belaque village 30/10/98.
- Visiting of WHO and Solidarity organization on 30/10/98, and completion of the survey program.

#### **IV. Briefings on General Observations of the Situations in Bamyan:**

During the survey operations, besides the process of interviewing and filling of the interview forms, insights on the general situations in Bamyan were gathered, the results of which are briefed as follows:

##### **1- The Present Status of the Organizations in Bamyan:**

###### **a- Abin-i-Sina Public Center:**

An Afghan NGO with the main office in Peshawar and a regional office in Bamyan. It has lost most of their office facilities during the process of political change in Bamyan, in spite of this, to a good extent it has remained active in primary health care services and vaccination services in many districts and sub-district of Bamyan and in many districts of Hazarajats in the surrounding provinces of Bamyan (see map III Annex). Most of its facilities and its medical needs including the salaries of its staff members are provided by WHO offices.

###### **b- WHO:**

Its office is open in "Chowni section of Bamyan City". It is the only UN organization office, which has remained functioning in Bamyan province and in the surrounding Hazarajat districts of other provinces of the region. See map (III) in the annex.

Dr. Shakoor who is the representative of the WHO center in Bamyan, mentioned that WHO assistance are in the form of technical facilities, provision of medicines and training assistance and facilitating health survey operations to many of the NGOs who are involved in health services in the whole Hazarajat region including those who are serving the people in Bomayan province. Abn-I-Sena Public Health Center, ICRC and government hospital of Bamyan are provided medical needs and fund for the winter season. Health activities previously carried out by UNICIF, is now left to WHO, because UNICIF is not present there.

Dr. Shakoor predicted a grime situation for the people of Bamyan during the coming winter.

- Blockades of regions and districts that will happen by heavy snow.
- Shortage of food in general
- Existence of wide spread diseases
- Poor nutrition and food sources (Potatoes and Barely with limited quantity of cooking oil), which would cause problems of digestive system and malnutrition in general
- Eye diseases (Trachoma) due to vitamin A deficiency. (WHO has distributed vitamin A and tetracycline for prevention of eye diseases).

###### **c- WFP:**

This office of UN organization was closed and only two computer of WFP was saved from looting, by WHO which is closely located to WFP office.

###### **d- UNHCR:**

This office located at the neighborhood of WHO was at the hand of Taliban and no body was present from this UN organization in Bamyan.

**e- Solidarity:**

A widely involved organization in the area of wheat seed distribution, agricultural extension, animal husbandry, health services (clinics), distribution and extension of vegetable seeds and construction of culverts, bridges and roads mainly working on the risky road from "Maidan Shahar" to "Bamyan".

Mr. Gadras a French logistic and agriculture specialist the responsible of Solidarity in Bamyan explained that:

- They evacuated their staffs who were from outside of Bamyan during the capturing of Bamyan by Taliban. Agricultural staffs who were mostly from Bamyan and other places of Hazarajat remained on their works. On 13<sup>th</sup> of September due to threats and fear from Taliban opposition, the local staff was re-evacuated. Later, on 4<sup>th</sup> of October they came back.
- They have a plan for nursery establishment in the districts of Sheber and Saighan. Agricultural courses for farmers in establishing nurseries and seed multiplication and distribution was part of their previous activities, which will be revitalized in the future. During the previous government authorities a French women from Solidarity whose name was remembered by the people in "Bom-Saraie" village as "Ms. Dominique" has shown the kitchen gardening and cooking methods of vegetables to the women in the villages of Bom Saraie, Robot Katwaie and Foladi valley. Tomatoes, Broccoli, and Cauliflower has been introduced by her, and women has been shown how to use Ash in washing their hands.
- Food shortage due to wheat rust, loss of vehicles and transportation facilities is becoming a main problem in Bamyan.

**f- CCA Office:**

Is still closed.

**g- DHCA:**

Has just attempted to reestablish its rehabilitation activities.

**h- Action:**

Which had started its initial step before the Taliban empowerment in Bamyan is inactive now.

**i- ICRC:**

Had lost the life of two of its staff member in Bamyan is presently closed.

**j- FAO:**

The representative of FAO professor "Niataqi" who is from Yakawlang district of Bamyan is staying in Solidarity staff house, his area of activities is establishing nurseries in Yakawlang. He mentioned that 23 days ago Solidarity people traveled to Yakawlang and came back to Bamyan with no problems. Mr. Niataqi mentioned that in the remote southern areas of Koh-i-Baba area of Hazarajat, people collect wild Rhubarb and after drying it they make flour from it from which they prepare bread. The roots of a wild crop which is called "logure" is dried and after grinding and making it in flour, they make bread out of it. Potatoes are boiled and mixed with barley flour for preparing bread.



## **2- Land Use, Water Resources and Food Production:**

Irrigated farming is a predominant farming practice in Bamyan. Potatoes, Wheat, barley, mungbeans and peas are the main food crops and alfalfa, clover and Shakhel are grown for feeding livestock. Fruits such as apricots and apples have shown good results though they are growing these fruits and vegetables in the surveyed areas in very limited scale. One seer of wheat seed produces about 20 seers of output and one seer of potatoes seed is producing about 50 – 60 seers of potatoes. Onion, leek and carrots and turnips have shown good results, though grown in limited scale.

Over 90% of farms are irrigated from the rivers (1): Foladi river originating from Kohibaba, southwest, (2): Surkh dara river coming from the northwest (Bandi Amir) and (3): Chap dara and Rast dara rivers are also coming from the melting snow of Koh-I-baba. About 10% of irrigation water is coming from springs. Flat basin irrigation from the canals diverted from the rivers are common. Furrow irrigation which is used in sloppy hillsides was observed as poor practice in many of the farming areas. This was a poor method because they have not used any land terracing in these areas and water in downward movement is washing the soil and it is an inefficient practice for plant utilization of water also.

The main long run needs to improve food production and farming, appears to be:

- Establishing nurseries and extension of horticulture as high value agricultural enterprise.
- Improving of intakes irrigation canals and irrigation methods.
- Extension of improved seeds, chemical fertilizer and chemicals for plant protection.

## **3- Livestock Raising:**

- Sheep/goats raising were in two forms. (1): very small number (flocks) raising on the farms and (2): large flocks grazing in out side the villages in open natural grazing areas.
- The first form is for fattening sheep and goats and the second form is for breeding and reproduction of flocks. For lambing period the flock is brought to the village at the early spring and latter it is transferred back to open grazing lands "aielaques" where the women of the flock owners also goes for collecting of dairy products and making Quroot "dried Yogurt" and "butter fate".
- Dairy cows raising are mostly part of the animal husbandry activity of the farming, calf and milk production is the main output from dairy cows raising.
- Animal health services, animal feeding, and marketing of animal products are the basic needs of animal raising enterprises in Bamyan/Hazarajat region.
- Promoting of handicraft from wool (Gelem waiving and making of "Namad" and knitting crafts) are the basic income earning skills for Hazarajat villagers.

#### **4- Transportation, Marketing and Income:**

- Poor transportation facilities, bad roads and risks in transporting Bamyan main output (potatoes and poplar beams) to the outside provinces have stress the income earning capacities of Bamyan farmers.
- A 14 year old boy in "Bam Saraie" village explained that his father has transported 4,000 seers of potatoes to "Kahmard" district at the north of Bamyan. He was expecting that his father would exchange the potatoes at the rate of 4 seer of potatoes/seer of wheat. This is a very cheap rate compare to the price of potatoes in Ghazni or Kabul.
- In Qazan village, in 1998 harvest "Haji Hussian Bakhsh" produced 3,000 seers of potatoes. Because of limitations in marketing/lack of buyers, it was still stored in a basement.
- The same person mentioned that last year (1997) potatoes of some of the people was purchased 7,500 Afs/seer by an organization and was distributed to poor people in cheaper prices. "Haji Hussian Bakhsh" mentioned that low potatoes prices will discourage potatoes production in Bamyan.
- In Bamyan city, the old Bazaar located at the northwest side of the city just close to the right hand side of the "Big Buda" statue has been abandoned (all shops demolished) by the previous authorities and a new Bazaar is established at the southeast location of the city very close to the northwest of the historical city of "SHAR-I-GHULGHULAH" see map (II) in annex.

The new bazaar, though with nicely design streets and about 800 to 1,000 new shops is having a poor and less active transaction environment. Relative to so many shops mostly selling mixed imported commodities, customers and buyers even in special bazaar days were very few. Locally produced commodities "Quroot" dried yogurt/whey, or dried apricots and Bamyan handicraft, were not seen in large quantities. Large whole sale markets (Mandawi) of food grains and flours were not seen as typical as it is very common in many of the provincial capital cities. All selling of these commodities were at retail level and in smaller quantities.

#### **5- Winter and Needs for Fuel/heating of Houses:**

- Two or three types of poplar trees, willows, and short shrub type of non-fruit trees were the predominant agro-forestry in Bamyan. Besides being used for timber, the branches of these trees and shrubs are cut and dried for fuel also.
- Cow dung are mixed with straw, and dried in the form of rolled or flat cakes, and used as fuel for heating and cooking purposes.
- Round or squared blocks of "sods" are cut from meadows growing around the rivers or on the slops of hills. They let the sods to be sun dried and during the winter it is used as a fuel for warming homes through the ground ovens (Tandoor) and for backing bread and warming water. Environmentally, this is to an extent damaging the natural system of pasture and soil preservation system in the sloppy lands of narrow valleys.
- In the short run, the efficiency of the presently used local fuel can be improved through local stoves and ovens improvement. This will reduce the required quantity of fuel per family and the health hazards to the family members from high masses of smoke diffused within the homes of the villagers.

- For the very immediate emergency needs of the coming winter, clothes for making quilts could be distributed to the poor families using/providing, wool or cotton by the families themselves for filling of the quilts.
- In the longer run, small hydroelectric sources of energy from the potential of the Foladi and Surkh dara rivers and other small water flows could be considered for the needs of villages and through participatory initiatives of the benefiting communities.
- In the long run, completion of the remaining works of hydroelectric plant of DAHNA-I-AHENGARAN and "SARA-I-TOPCHI", in west of Bamyan is an easy possibility to provide electricity for the city of Bamyan. This concrete canal and the intake from the river (joined spot of Foladi and Surkh Dara rivers) which starts from the point of Dahna-I-Ahengar and extend to Saray-I-Topchi and the tunnel up to "SHASH POLE" at the west of Bamyan city has been constructed before the Russian invasion of Afghanistan (beginning of the decade of 1970) at the period of Mohammed Dawood government. The remaining work of this incomplete project can be completed and Bamyan can benefit from hydroelectric energy as a modern city.

## **6- Health of the People:**

On the base of a visit with Mr. Gadras a French expert responsible of Solidarity Bamyan office, there are 75,000 people in Bamyan province which require health care services.

Based on visiting communities and information from local experts and the working NGOs sub offices in Bamyan, the existing of the following health problems and diseases were mentioned:

- 1- TB and other respiratory diseases due to lack of hygiene and sanitation.
- 2- Goiter due to drinking of melting snow water from the mountains, which are mostly deficient in "Iodine".
- 3- High blood pressure.
- 4- Malnutrition (general and mostly in mothers and children and elders)
- 5- Digestive diseases and digestive problems, (due to parasite, germs and eating of potatoes without cooking oil or fat consumption)
- 6- Leprosy which is a well-known Hazarajat regional specific disease.
- 7- Eye diseases/problem, due vitamin deficient foods and lack of health information of mothers and other family members.

Public health services are limitedly offered by few NGOs. The Iranians used to provide good support in health services (Hospital) in Bamyan, now those facilities and hospitals are without sufficient support, neither from outside nor from the government side.

## **7- Schools and the Status of Education:**

Based on UN and NGOs sources,

Previous to the present political change in Bamyan, Bamyan district/center had 8 girl schools and 22 boys' schools. In Yakawlang district they used to have 36 boys schools and 20 girls schools.

During the days of capturing of power by Taliban, most of the schools for boys and girls remained closed. Bamyán University, which is closed now, had 244 students from which 13 were girls.

During the days of carrying of HLS survey (October 26 – 31) it was announced by Taliban that boys school may get prepared to reopen and the villagers senior member were asked by the authorities to see the authorities/department of education with this regard.

In some of the surveyed villages the situation of schools and education was as follows:

- **In Bam Saraie Village:**

- The association of services to women through Habitat had constructed a 12 rooms building for a women and children clinic, training center for tailoring, embroidery knitting and the art of hand writings (calligraphy) for the whole Dara-i-Saydan valley. The work was close to be finished, but presently it was stopped.
- An 8 room building for girl school up to fourth grade was constructed but now it was closed.

- **Dam-e-Joy Village:**

A building for boys school up to 10<sup>th</sup> grade exist which is closed up to now.

- **Shahidan and Shiber-2 Villages:**

Two primary schools in the villages of "Shahidan" and "Shiber-2," used to be functioning, however has remained closed now.

- **In Seya Khar Bloque Village:**

A school up to 12<sup>th</sup> grade "Shah Foladi high school" was kept open by SCA before the recent change of power, but it is expected to be reopened very soon. The girl's schools up to 4<sup>th</sup> grade having 120 students used to be open, however it is closed now and home schools privately has replaced it to an extent. The provision of salary to the teachers are a problem because people cannot afford it. A few days ago (according to a villager) it was announced that with Islamic Hijab the girls should attend the schools.

- **In Qazan Village:**

- The "Shahid Nasrat" boy's school (8 rooms building) has been constructed by the people of the community. The doors, tables and chairs, windows and floor coverage is still needed. From an organization (Murkaz-I-Shahida). A women by the name of (Ms. Sema Sumer) had came from (Jaghori) she has promised assistance with this regard. If assistance is received 300 – 400 boys and girls will have primary education opportunities. There is good possibility of home school if girl's section of students are not allowed to go to school.

- **Chap Dara Village:**

- There is no school for girls and boys. They are getting their education in the masque from Mullah.
- The people of this village indicated that they would accept home school system.
- There are teachers (for 6 – 8 grades schools) available to work in the village.

- About 200 boys and girls in school age exist in this village.
- **Jogra Khail Village:**
  - Before the change of power to Taliban, girl school up to 6<sup>th</sup> grade was functioning. Now, it is closed and the people of the village who are Tajik do like to have girl school up to 6<sup>th</sup> grade.
  - The boys school (Bamyan high schools) is closed and the villagers were expecting that this high school would be open very soon.

#### **8- Village handicrafts:**

Gelem waiving, making of "Namad", knitting of socks, sweater and gloves, tailoring and embroidery, Quilt sewing are the main traditional handicraft in Bamyan/Hazarajat. Carpentry, Blacksmithy, masonry, and metal works are typical men's related skills in Bamyan. Habitat has started to build a center of skill training (12 room building) in Bam-Sarie village, which is yet not completed.

The barrier to handicraft growth as source of income are identified as follows:

- Shortage of reaching to attractive markets for selling outputs (local and/or outside markets)
- Limitation of raw materials to the poor families' skilled family member
- Tools and training needs for younger members of the poor families.

In two or three of the surveyed villages the Gelem "waiving frames" were observed outside the houses where women were seen working to gather in waiving of Gelems. Mostly they were using black and white wool threads. Two women can complete a (1.5x3 M) Gelem in five days.

In thread making from wool they (women) charges 105,000 Afs./seer of wool

### **C: Future Outlooks for CARE Activities in Bamyan**

#### ***A- Justification for CARE initiative for establishing an activity center in Bamyan.***

Bamyan and its surrounding Hazara communities are the most needy and disadvantaged part of the central mountainous region of Afghanistan. The most basic need status of livelihood: nutrition, food, health, education and the economic environment of the communities are reflecting an alarming stage of human caused and natural caused disaster in that part of the country.

The ending of the blockade and the opportunities for all of the organization to take initiatives in providing assistance to the people of Hazarajat, is a challenge to CARE Afghanistan for taking steps and establish an activity center for promoting livelihood security in that area of the Afghanistan.

#### ***B- Selection of focal areas of needs for intervention:***

CARE should follow a path where the needs of the communities should be met according to the priorities.

The most disparate (immediate) needs should come on top and be provided through emergency and relief activities. Following to that, the stage for rehabilitation and later on the development stage will reach for self-reliance and self supported activities in the communities.

With regard to Bamyan, the realization of the present situation requires the following activity programs:

- 1) Food emergency to be based on:
  - Prioritization of communities for finding the focal disprivillaged communities.
  - Prioritization of families for selection of the focal poor (needy) families.
  - Specification of gender for isolating the needs for mother/child, adults, elders or the whole families.
- 2) Distribution of cloth for making quilts particularly for those families who are poor returned IDP or poor returned refugees. The already made quilts may be distributed where they are made by the skilled poor women in the villages.
- 3) Potatoes to be purchased in standard price and be distributed to the poor people in lower price. This would be to assist the grower (producer) of this major product and at the same time provide cheaper food for poor people.
- 4) The area of agricultural rehabilitation,
  - Establishing of nurseries and extension of horticulture as a high value agricultural enterprise.
  - Improvement of intakes, irrigation canals and irrigation methods/practices.
  - Extension of agricultural inputs and improve agricultural practices.
- 5) Facilitating the processing, storage, transportation, and marketing of agricultural products for improving the income earning capacities of farmers, facilitating the selling of timber which is a main agro-forestry product in Bamyan.
- 6) Training of farmers in certain farming, animal husbandry, horticultural skills and expanding the knowledge scope of farmers in ways and means for sufficient use of their agricultural resources.
- 7) Extension of health and sanitation through farmers and farmers household training.
- 8) Establishing of home schools in the communities where small children (girls and boys) do not have the social opportunities for primary education.

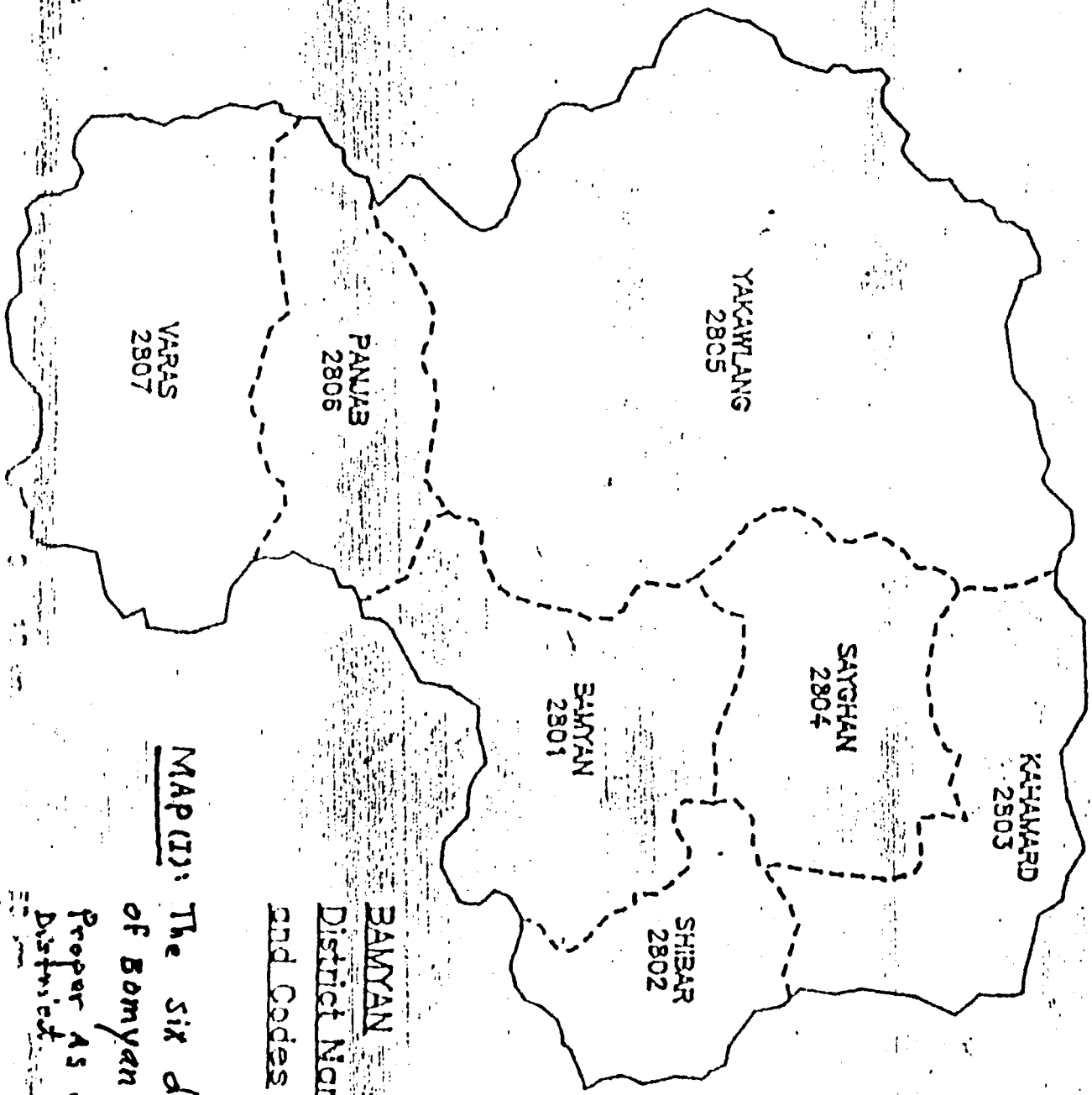
## **ANNEXES:**

MAP "I": Bamyan center and the survey locations

MAP "II": The six dissects of Bamyan province

MAP "III": WHO activity areas in Bamyan

SKETCH "I" Distance from Maidan Shaher to  
Bamyan (174 Km)

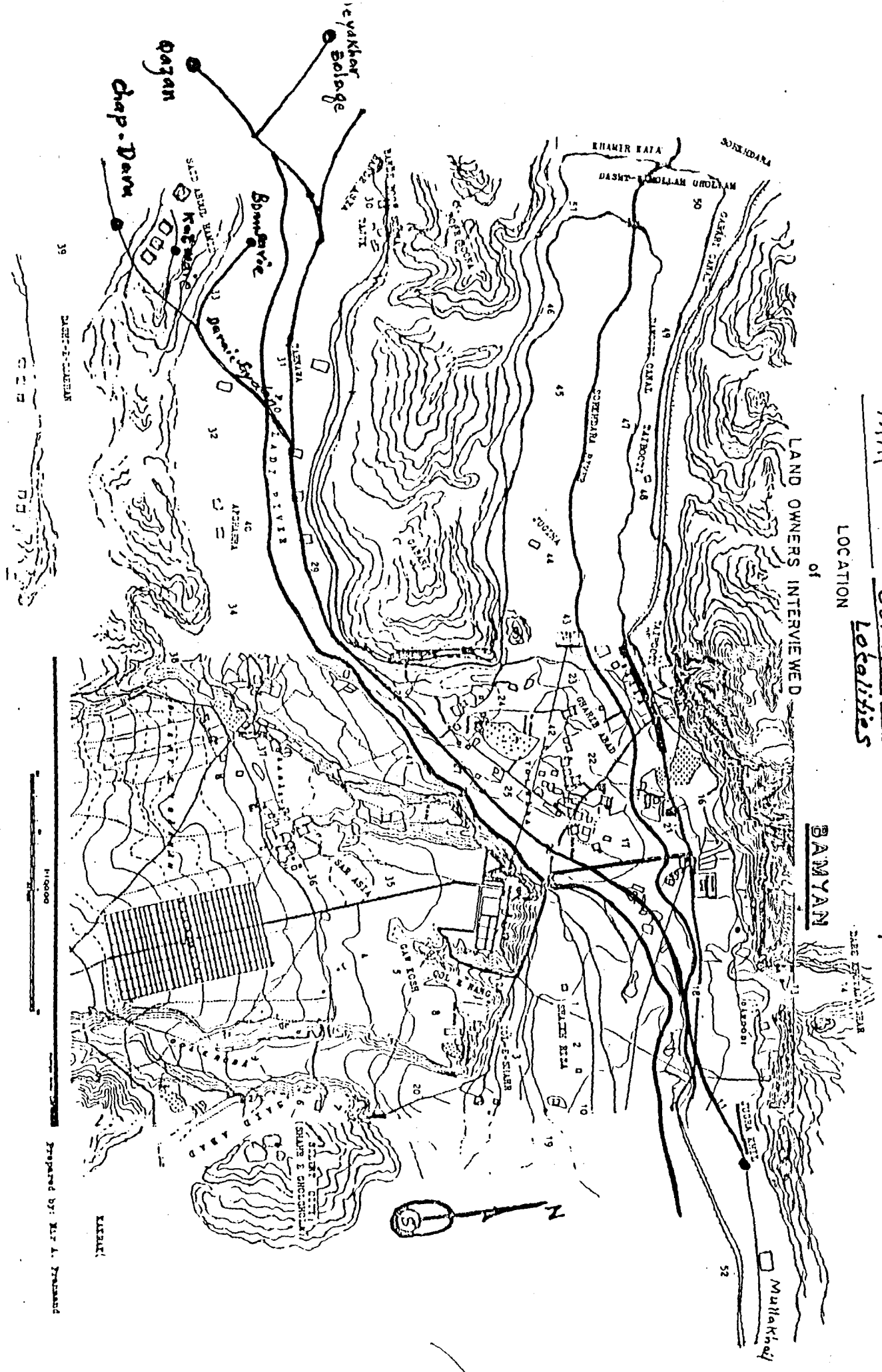


BAMYAN  
District Names  
and Codes

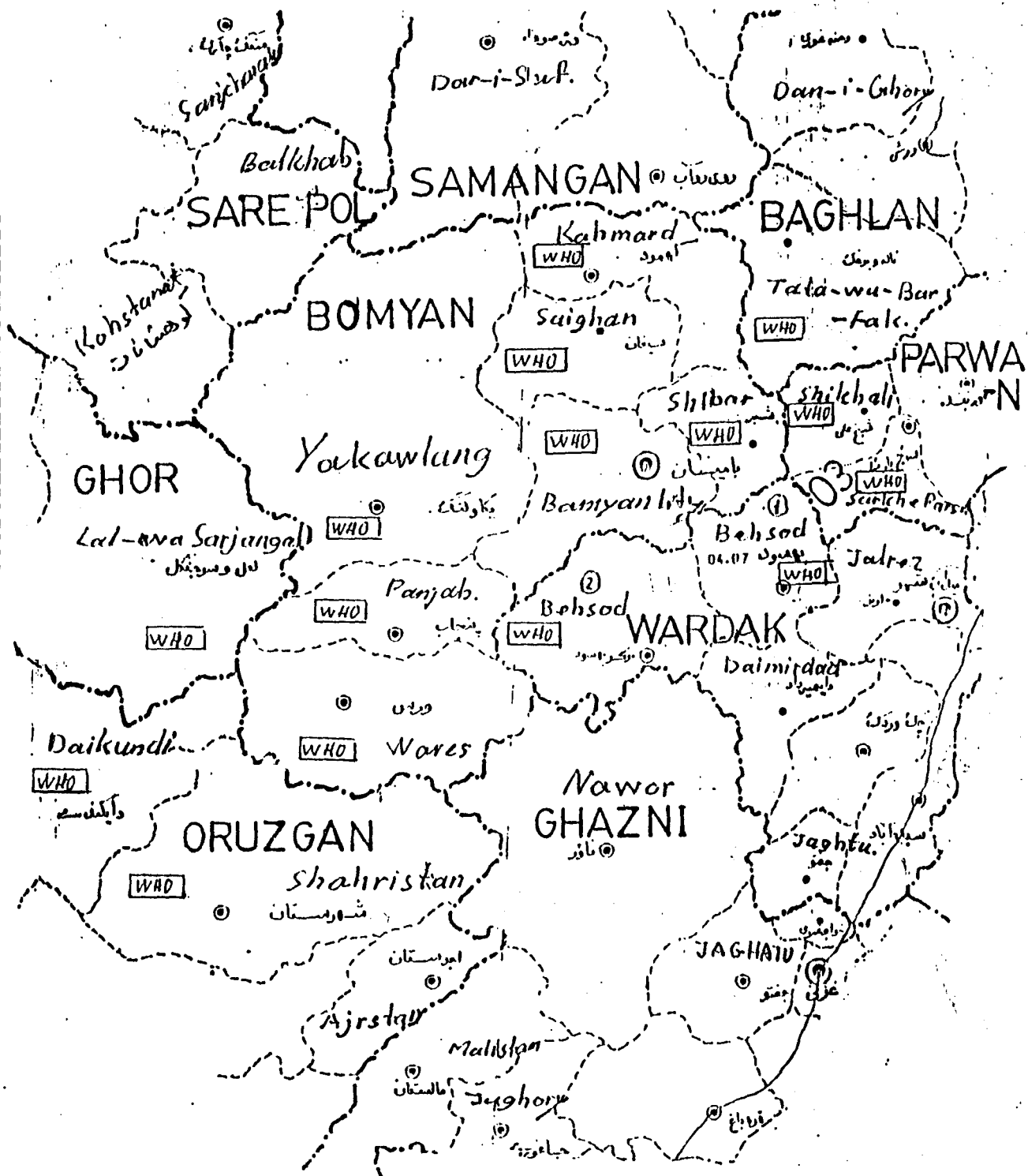
MAP (I): The six districts  
of Bamyán and Bamyán  
Proper as separate  
Districts.



MAP "D" Banyan Center & The Survey  
 of Localities  
 LOCATION

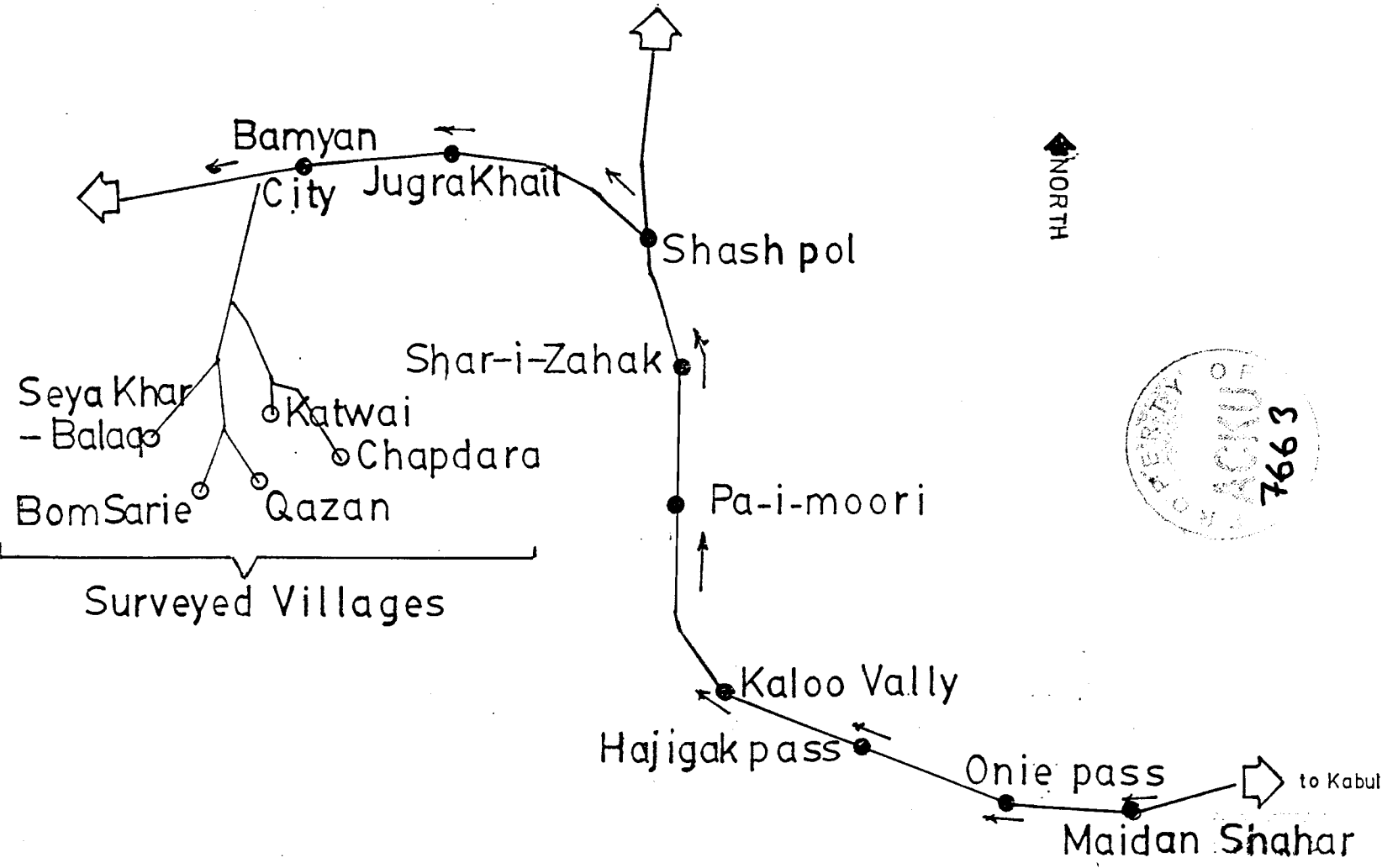


Prepared by: Mr. A. Prasad



PREPARED BY: ABDUL HAKIM RANJBAR.  
 DATE: NOV. 12, 1998.

MAP [ 3 ] : WHO ASSISTANCE ACT-  
 -IVITY AREAS IN BOMYAN DIST-  
 -RICT AND IN RELATED HOZARAJ-  
 -AT AREAS IN THE Surrounding Prov-  
 -inces



Sketch of Distance From  
 -Maidan Shahar to Bamyan [174. Km.]